

**lyra hocker 11-660**

Hannes Wettstein, 2007

Sitz Formsperrholz, Hinterfüsse und Rücken massiv  
gebogen

B46, T44, H84, SH60



Hannes Wettstein, 2007

Assise en contreplaqué moulé, dossier et pieds arrière en  
bois massif cintré

L46, P44, H84, HAss60

Hannes Wettstein, 2007

Moulded plywood seat, rear legs and back solid  
bentwood

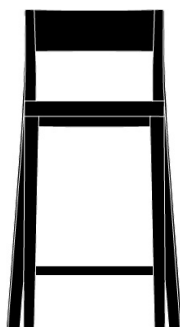
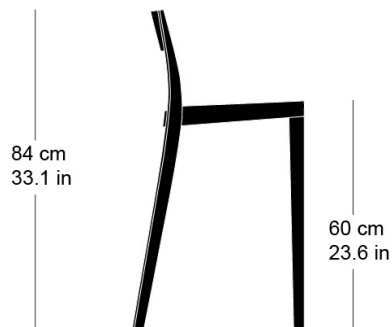
W46, D44, H84, SH60

## Varianten / variantes / variants

Lyra  
11-680Lyra  
11-663Lyra  
11-683Lyra  
6-540Lyra  
6-540aLyra  
6-543Lyra  
6-543aLyra  
6-550Lyra  
6-550aLyra  
6-553Lyra  
6-553aLyra  
6-555Lyra  
6-555a

## Technische Angaben / specifications / specifications

## Masse / mesure / measure

46cm  
18.1 in84 cm  
33.1 in60 cm  
23.6 in

Gewicht / ponds / weight

4.2 kg 8.4 lb

**lyra hocker 11-660**

## Holzarten / types de bois / types of wood

## Belag / revêtement / surface



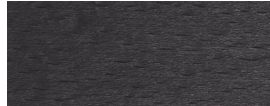
Buche natur      BN 000 AM  
Beech natural    BN 000 AM  
Hêtre naturel    BN 000 AM



Buche schwarz      BB 203 SG  
Beech black        BB 203 SG  
Hêtre noir         BB 203 SG



Eiche natur        EN 000 AM  
Oak natural        EN 000 AM  
Chêne naturel     EN 000 AM



Buche anthrazit    BB 200 SG  
Beech anthracite   BB 200 SG  
Hêtre anthracite   BB 200 SG



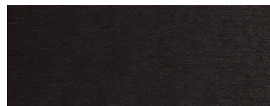
Esche natur        FN 000 AM  
Ash natural        FN 000 AM  
Frêne naturel     FN 000 AM



Eiche Räuchereiche EB 535 AM  
Oak smoked oak    EB 535 AM  
Chêne chêne fumée EB 535 AM



Buche geweisst    BG 172 SG  
Beech whitewashed BG 172 SG  
Hêtre teinté blanc BG 172 SG



Buche Ebony        BB 100 SG  
Beech ebony        BB 100 SG  
Hêtre teinté ebony BB 100 SG



Esche weisspigmentiert FW 001 OL  
Ash white-pigmented FW 001 OL  
Frêne pigmenté blanc FW 001 OL



Buche Nuss         BB 151 SG  
Beech walnut       BB 151 SG  
Hêtre teinté noyer BB 151 SG



Esche schwarz      FB 203 AM  
Ash black            FB 203 AM  
Frêne noir            FB 203 AM