

ga stuhl 7-070

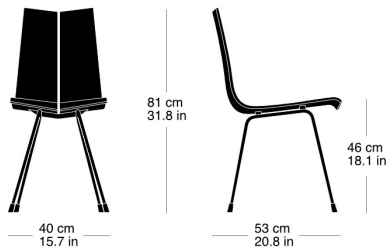
Hans Bellmann, 1955
Sitzschale Formsperrholz zweiteilig, Metallgestell schwarz
matt
B40, T53, H81, SH46

Hans Bellmann, 1955
Coque d'assise en contreplaqué moulé en deux parties
L40, P53, H81, HAss46

Hans Bellmann, 1955
Two-part moulded plywood seat shell, black matte metal
frame
W40, D53, H81, SH46

Technische Angaben / specifications / specifications

Masse / mesure / measure



Gewicht / ponds / weight

4.3 kg 8.6 lb

ga stuhl 7-070

Holzarten / types de bois / types of wood



Natural beech HG 520
Buche natur HG 520
Hêtre naturel HG 520



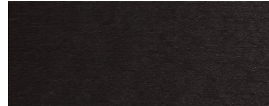
Anthracite beech HG 200
Buche anthrazit HG 200
Hêtre anthracite HG 200



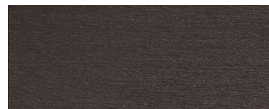
Black beech HG 203
Buche schwarz HG 203
Hêtre noir HG 203



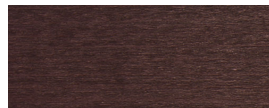
Natural black walnut HG 560
Schwarznuss natur HG 560
Noyer noir naturel HG 560



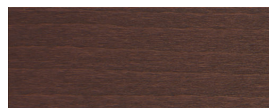
Ebony beech HG 100
Buche Ebony HG 100
Hêtre teinté ebony HG 100



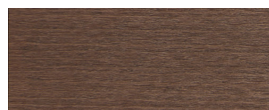
Wenge beech HG 110
Buche Wenge HG 110
Hêtre teinté wenge HG 110



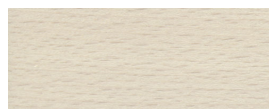
Mahagony beech HG 130
Buche Mahagoni HG 130
Hêtre teinté mahagoni HG 130



Maron beech HG 120
Buche Maron HG 120
Hêtre teinté maron HG 120



Nut beech HG 151
Buche Nuss HG 151
Hêtre teinté noyer HG 151



Whitewashed beech HG 172
Buche geweisst HG 172
Hêtre teinté blanc HG 172

Belag / revêtement / surface