

dom 6-910a

Studio Meda, 2017

Armlehnstuhl, Sitz Formsperrholz, geschlossener Rücken,
Rückenteil und Hinterfüsse massiv gebogen,
Reihenverbindung
B54, T55, H80, SH46

Studio Meda, 2017

Fauteuil, assise en contreplaqué moulé, dossier fermé,
partie arrière et pieds arrière massifs cintrés,
raccordement en ligne
L54, P55, H80, HAss46

Studio Meda, 2017

Armchair, seat moulded plywood, closed back, back part
and rear feet solid curved, row connection
W54, D55, H80, SH46

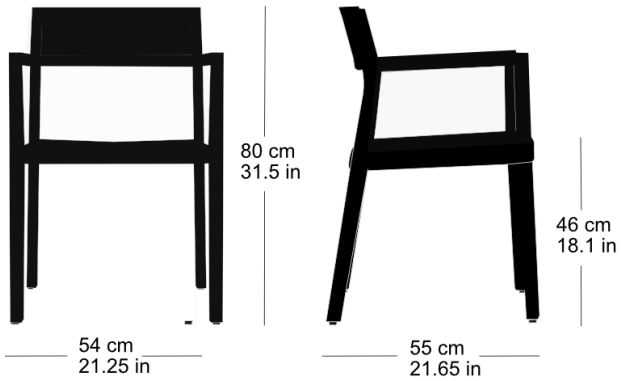
Varianten / variantes / variants

dom
6-900dom
6-900vdom
6-900adom
6-906dom
6-906vdom
6-906adom
6-910dom
6-910vdom
6-916dom
6-916vdom
6-916adom
17-900dom
17-910dom
6-815dom
6-825dom
11-900dom
11-906dom
11-900rdom
11-906r

dom 6-910a

Technische Angaben / specifications / specifications

Masse / mesure / measure



Gewicht / ponds / weight 7 kg 14.0 lb

Reihenverbindung /
accouplement / mating system ja / oui / yes

Stapelung / empilage / stacking 5 Stühle / chaises / chairs

dom 6-910a

Holzarten / types de bois / types of wood



Hêtre naturel BN 000 AM
Buche natur BN 000 AM
Beech natural BN 000 AM



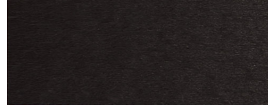
Hêtre anthracite BB 200 SG
Buche anthrazit BB 200 SG
Beech anthracite BB 200 SG



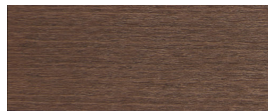
Hêtre noir BB 203 SG
Buche schwarz BB 203 SG
Beech black BB 203 SG



Chêne naturel EN 000 AM
Eiche natur EN 000 AM
Oak natural EN 000 AM



Hêtre teinté ebony BB 100 SG
Buche Ebony BB 100 SG
Beech ebony BB 100 SG



Hêtre teinté noyer BB 151 SG
Buche Nuss BB 151 SG
Beech walnut BB 151 SG



Hêtre teinté blanc BG 172 SG
Buche geweisst BG 172 SG
Beech whitewashed BG 172 SG

Belag / revêtement / surface